



**NetWork
Kansas**

**Building an
Enduring
Legacy**



We are the
RESOURCE PARTNER NETWORK

We are the
COMMUNITY NETWORK

We are the
ENTREPRENEUR'S NAVIGATOR

We are the
NETWORK OF NETWORKS

QUICK REFERENCE

BUILDING AN ENDURING LEGACY

- PRESIDENTS' MESSAGE Page 2
- CAPITAL: LOAN PROGRAMS Page 3
- CAPITAL: VENTURE PROGRAMS Page 4
- TECHNICAL ASSISTANCE Page 5
- PROGRAMMING: IMPACT Page 6
- PROGRAMMING: ENTREPRENEURSHIP (E-) COMMUNITY PARTNERSHIP Page 7
- HYPER-CONNECTIVITY: IMPACT Page 8
- HYPER-CONNECTIVITY: NETWORKED Page 9
- ABOUT US: MISSION Page 10
- LEADERSHIP & STAFF Page 11
- BOARD OF DIRECTORS Page 12
- SPONSOR THANKS Page 13



Building an Enduring Legacy



Dear Friends and Supporters,

As we turn the page on another transformative year, the theme of “Building an Enduring Legacy” feels both fitting and aspirational for NetWork Kansas. Legacy is more than just a mark we leave behind; it’s about nurturing the foundations and relationships upon which future successes will be built. This year, we have reinforced our commitment to creating a lasting impact that will resonate through generations of Kansans.

Our Entrepreneurship (E-) Community Partnership stands as a shining example of this commitment. With 75 partner communities embracing our model, we’ve witnessed firsthand how localized empowerment, ecosystem engagement and innovation can drive meaningful change. These communities are not just beneficiaries; they are the architects of a visionary approach that is reshaping how we think about economic development in both rural communities and the urban core.

In our efforts to support entrepreneurs, we have taken significant strides to ensure that our impact endures. Our GROWKS Loan and Equity programs are designed to create robust, sustainable funding avenues. We are steadfast in our mission to make sure that every entrepreneur, from the heart of urban centers to the far reaches of rural areas, has access to the resources and opportunities they need to succeed.

The true strength of our work lies in our dynamic partnerships. Our collaboration with exceptional Entrepreneurship Support Organizations has enabled us to push boundaries and explore new horizons. This synergy allows us to craft innovative solutions and foster an ecosystem where bold ideas can flourish. It is through these partnerships that we are building a legacy of enduring support and opportunity.

In a shared lockstep vision with the NetWork Kansas Board of Directors for over 19 years, we jointly see NetWork Kansas as more than an economic development entity; it is a catalyst for enduring change and progress. Our unwavering promise to you—our partners, stakeholders, and supporters—is to provide unparalleled mentorship, funding, and resources to elevate and fuel the aspirations of entrepreneurs. Our dedicated team is committed to a work environment that thrives on continuous learning and impactful contributions.

As we look ahead, we are energized by the prospect of what’s to come. Our journey is one of perpetual growth and transformation, and together, we will continue to build a legacy that endures. Thank you for your steadfast support and belief in our vision. Here’s to forging a future filled with promise and possibility.

With sincere appreciation,

Erik Pedersen
President and COO, NetWork Kansas

Tony Dellasega
Chief Risk Officer, Community National Bank & Trust, NetWork
Kansas Board Chairman

CAPITAL

Mobilizing assets, inclusively, to help entrepreneurs and local economies thrive through impact investing, gap financing and equity investments.

LOAN PROGRAMS

PROGRAM	LOANS	\$	LEVERAGED \$
StartUp Kansas	316	\$9,403,105	\$41,792,469
E-Community	1014	\$32,861,431	\$151,472,714
Capital Multiplier	114	\$15,686,622	\$229,695,388
Kansas Community Investment Fund	138	\$6,071,301	\$20,658,280
Economic Development Administration	7	\$866,700	\$1,320,800
Restart Kansas	70	\$742,283	\$0
Kansas Healthy Food Initiative	39	\$867,261	\$856,964
TOTAL	1,698	\$66,498,703	\$445,796,615

As of June 30, 2024



PROGRAM	LOANS	\$	LEVERAGED \$
Rural/Urban Distressed	60	\$5,172,806	\$20,158,551
Minority/Women-Led Starter	76	\$6,103,507	\$13,603,300
Minority/Women-Led Growth	11	\$2,155,600	\$11,420,081
Community Asset	7	\$1,092,740	\$11,663,329
TOTAL	154	\$14,524,653	\$56,845,262

As of June 30, 2024



Success Spotlight

Razer Precision Instruments, located in Junction City, secured startup capital through the GROWKS Loan Program.

Scan to view their story.



CAPITAL cont.

VENTURE PROGRAM

PROGRAM	EQUITY INVESTMENTS	\$	LEVERAGED \$
Capital Multiplier Venture Fund	46	\$5,695,599	\$113,670,857
TOTAL	46	\$5,695,599	\$113,670,857

As of June 30, 2024



Success Spotlight

Midwest Hemp Technology, located in Augusta, secured equity capital through the GROWKS Equity Fund Program.

Scan to view their story.



PROGRAM	EQUITY INVESTMENTS	\$	LEVERAGED \$
Minority/Women-Led Angel	7	\$1,329,988	\$5,598,612
Angel Capital	15	\$2,899,736	\$32,127,739
Community Equity Ownership	5	\$449,989	\$449,989
Multi-Fund	1	\$2,500,000	\$31,200,000
TOTAL	28	\$7,179,713	\$69,376,340

As of June 30, 2024

TECHNICAL ASSISTANCE

We help entrepreneurs navigate systems to connect with the right resources at the right stage of their business.

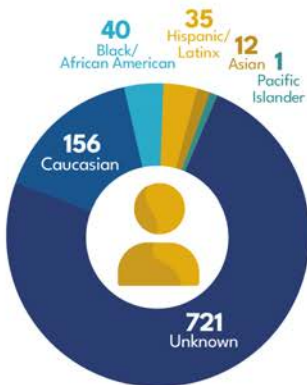
The Impact Investment Center

35,310 INBOUND LEADS
FROM INCEPTION TO JUNE 2024

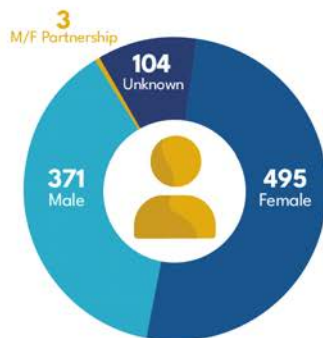


- TOP INQUIRIES**
1. Funding
 2. Regulatory Compliance
 3. Licensing
 4. Startup Questions
 5. Business Formation

- TOP REFERRALS**
1. KS Secretary of State
 2. KS Dept of Revenue
 3. KSBDC
 4. City/County Clerk
 5. Certified Development Co.



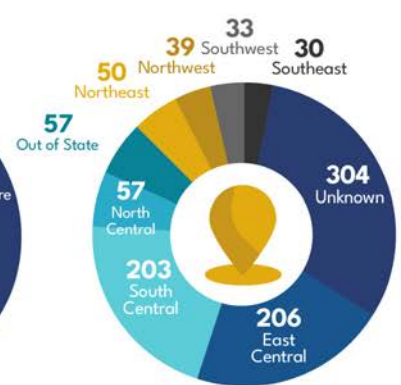
RACE/ETHNICITY



DEMOGRAPHICS



BUSINESS PHASE



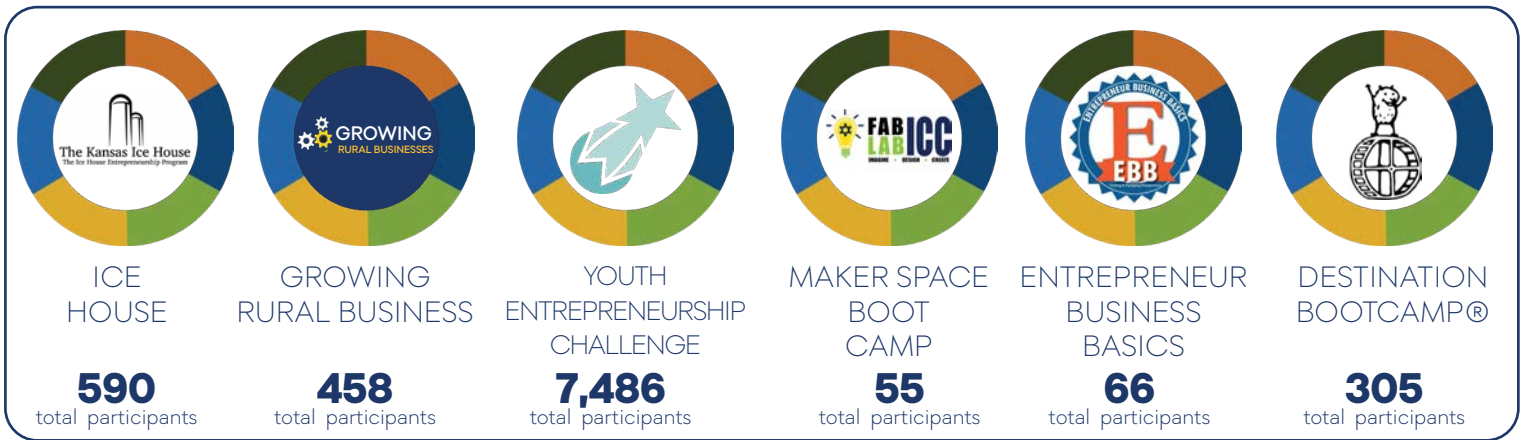
REGION

655 RESOURCE PARTNERS ACROSS THE STATE

TO LEARN MORE ABOUT NETWORK KANSAS AND THE IMPACT INVESTMENT CENTER, VISIT:
NETWORKKANSAS.COM

PROGRAMMING

We work with partners to identify impactful entrepreneurship programming.



From inception through June 30, 2024

PROGRAMMING cont.

Entrepreneurship (E-) Community Partnership

NetWork Kansas added two new communities to its Entrepreneurship (E-) Community Partnership. The new additions are: Sumner and Decatur County. Each community was selected through a competitive process. The new additions bring the total number of E-Communities served to 75 — the highest-ever in the organization’s history.



“NetWork Kansas will be a tremendous resource for Decatur County in helping better business resources, along with having many resources for future business startups and expanding existing businesses in Decatur County.” - Sharee Dempewolf: Oberlin-Decatur County Economic Development Corporation & Decatur Area Chamber of Commerce Executive Director

“Sumner County Economic Development believes in the importance of partnerships for the vibrant growth of communities. The programs offered through this partnership will enable the entrepreneurs and businesses within Sumner County to realize additional resources available for vital and sustainable growth.” - Stacy Davis, Executive Director, Sumner County Economic Development Commission.

HYPER-CONNECTIVITY

We value hyper-connectivity at the local, regional and state level.

NetWork Kansas funds are used for entrepreneurship programs, technical assistance, and capital programs for Kansas entrepreneurs working through its 650+ partner network and 75 Entrepreneurship (E-) Community Partnerships.

MEASURABLE IMPACT SINCE INCEPTION

CAPITAL

2,142

Loans, grants & investments made to Kansas entrepreneurs

\$97.6M

Total dollars through loans, grants & investments made to Kansas entrepreneurs by NetWork Kansas

\$674.9M

Total dollar amount leveraged by partners supporting Kansas entrepreneurs

PROGRAMMING

75

E-Community Partnerships

875+

Local residents involved in Local Leadership Teams

\$1.82M

Funding to host entrepreneurship programming

8,960

Participants involved in entrepreneurship programming

TECHNICAL ASSISTANCE

650+

Nonprofit and government-sector partners engaged

72K+

Referrals made to resource partners

35K+

Inbound inquiries

HYPER-CONNECTIVITY cont.

NetWorked for Change



More than 200 Kansans gathered for the 3rd Annual NetWork for Change conference in Wichita, KS. The 3rd Round of the NetWorked Community Solutions grant was announced at the conference.

NetWork Kansas reopened the NetWorked Community Solutions Grant for a third cycle of collaborative community-based grants bringing the total amount awarded, since inception, to \$265,000. Funding support from Blue Cross and Blue Shield of Kansas, the Kansas Health Foundation, and the Ewing Marion Kauffman Foundation makes these grants available. The purpose of the grant is to encourage cross-sector collaboration among participants of the NetWorked Partnership for Community Investment. The partnership focuses on connecting unconnected networks and closing gaps between people, information, and assets to develop pathways that boldly solve community challenges.

The 11 projects awarded for funding in Round 3 include:

- **Yuma Street Cultural Center Launch** | Project Impact Area: Community Development | Lead Applicant- Black Entrepreneurs of the Flint Hills.
- **MixMaster2024 Music Conference** | Project Impact Area: Entrepreneurship Support | Lead Applicant - Creative Impact Alliance DBA Lawrence Music Alliance.
- **Pitch Your Porch** | Project Impact Area: Entrepreneurship Support | Lead Applicant - Graham County.
- **Paint the Town** | Project Impact Area: Community Development | Lead Applicant - Harvey County.
- **Affordable Housing Development** | Project Impact Area: Community Development | Lead Applicant on the project is HOPE-CDC.
- **Connecting Entrepreneurial Communities (CEC)** | Project Impact Area: Entrepreneurship Support | Lead Applicant - Kansas State University.
- **Suicide Prevention and Awareness Community Mural** | Project Impact Area: Civic Engagement | Lead Applicant - Legacy Regional Community Foundation.
- **Rural Access to Community Health Innovation** | Project Impact Area: Health/Health Equity | Lead Applicant - NXTUS.
- **World Peace Wichita** | Project Impact Area: Health/Health Equity | Lead Applicant - Riordan Clinic.
- **Voter Engagement** | Project Impact Area: Civic Engagement | Lead Applicant - Sunflower Community Action.
- **Building a Family-Friendly Future: A Local Civic Action Guide** | Lead Applicant -Thrive Kansas.



Success Spotlight

Hear from participants about their experience at the 3rd Annual NetWorked for Change Conference

Scan to view.





OUR MISSION

NetWork Kansas offers essential financial resources, valuable relationships, expert knowledge, and experience through our partner networks to empower entrepreneurs.

ABOUT US

LEADERSHIP & STAFF

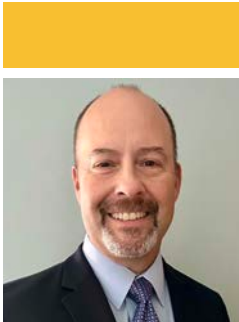


NetWork Kansas, a 501c3 nonprofit organization, is dedicated to making entrepreneurship a priority for economic and community development in the State of Kansas. NetWork Kansas connects aspiring entrepreneurs, emerging and established businesses to a deep network of business-building and community development resource organizations across the state. NetWork Kansas facilitates the development of an entrepreneurial ecosystem within participating communities through the Entrepreneurship (E-) Community Partnership. Contributing factors to successful development include the availability of financial capital, support by local leadership and development of educational resources. All of these factors combine to increase entrepreneurial activity in participating towns leading to increased startup activity, business expansion, job creation and more. NetWork Kansas is also the home of Entrepreneurial Growth Ventures. Visit: www.networkkansas.com

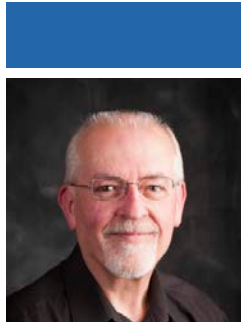


ABOUT US

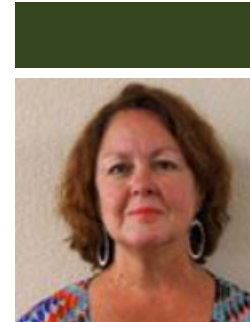
BOARD OF DIRECTORS



MR. ANTHONY DELLASEGA
Chief Risk Officer,
Community National Bank
Chair
Frontenac



MR. DAVID O'DELL CPA, CGMA
Former Professor of Accounting,
Department of Business, Chair,
McPherson College
Vice Chair
McPherson



MS. SUZAN BARNES
Owner, Grand Central Hotel
Cottonwood Falls



MR. WALLY KEARNS
Founding Partner,
Former State Director, Small
Business Development Centers
Salina



MR. COREY MOHN
Founding Partner,
Executive Director, Blue
Valley Center for Advanced
Professional Studies (CAPS)
Shawnee



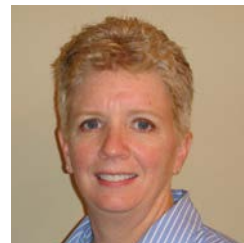
MS. CLARE GUSTIN
Former VP of Member Services
& External Affairs
Sunflower Electric Power
Corporation
Hays



DR. ROBERT WEEMS, JR.
The Willard W. Garvey
Distinguished Professor of
Business History, Wichita State
University
Wichita



MR. GREG JORDAN
Former State Director
Kansas Small Business
Development Center
Topeka



MS. MICHELE WEIGAND
CEO, Focused Perspective
Lawrence



MS. SARA ARNBERGER
President,
Great Bend Economic
Development, Inc.
Great Bend

THANK YOU TO OUR MAJOR CONTRIBUTORS

FISCAL YEAR MAJOR CONTRIBUTIONS REFLECTED

NETWORK KANSAS' MAJOR SPONSORS
SUPPORT A WIDE VARIETY OF
ENTREPRENEURIAL ACTIVITY AND HELP TO MAKE
CLOSING RESOURCE GAPS POSSIBLE





   @networkkansas

877.521.8600